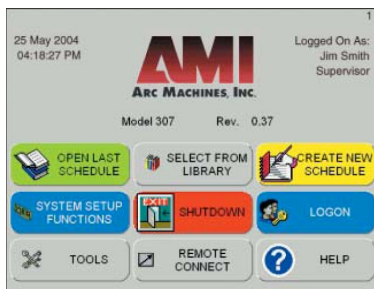


**MODEL 307****COST-EFFICIENT, FEATURE-RICH  
TUBE WELDING POWER SUPPLY**

*The widest range of orbital welding equipment in the world*

The Model 307 is one of the world's most advanced orbital tube welding power supply of its type. It is economical, easy-to-use, packed with useful features, and compatible with all AMI fusion weld heads currently in the field, as well as the Model 95 series featuring wire feed.

The Windows™-based software is PC compatible, and supplied with multiple languages. A color touch-screen makes data entry easy and convenient. The USB port facilitates simple and convenient storage of weld schedules and project data. Among the many useful features are auto-weld and tack-weld program development, programming by time and/or position, multiple weld schedule libraries, weld data recording, graphical user interface and on-screen help.



**150  
AMPS  
@ 100%**

**50/60  
Hz**

**SINGLE  
PHASE**

**WIRE FEED**

**WATER  
COOLING**

**QUICK SPECS****Input Power**

100 - 240 VAC service  
Single-phase  
50/60 Hz

**I/O Device**

USB (2.0)

**Memory Capacity**

20 GB

**Water Cooler**

Optional

**Weld Current**

3 - 200 A  
100% Duty Cycle  
@ 150 A

**Multi-Level Functions**

Primary Amps, Background Amps, Primary RPM, Background RPM, Primary Pulse Rate, Background Pulse Rate, Background Wire Feed Rate, Current Mode (constant, pulsed), Travel Mode (continuous, stepped, off), Wire Mode (continuous, pulsed, off)

**Compatible AMI Weld Heads**

All fusion weld heads; Model 95 series with wire feed.

**Current Pulse Rate**

0.05 - 50 PPS

**Overrides**

Current, RPM, Wire, Pulse Rate +/- 100%

**Dimensions**

15.75" x 11.5" x 25.25"  
(40 cm x 29 cm x 64 cm)

**Weight**

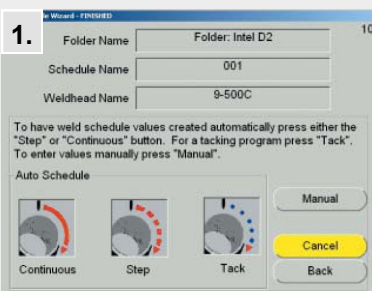
62 lbs.  
(28 kg)



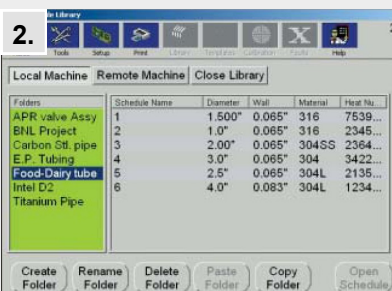
# MODEL 307 TUBE WELDING POWER SUPPLY

## STANDARD FEATURES

1. Automatic weld schedule generation (including tacking).
2. Multiple weld schedule libraries.
3. On-the-fly weld schedule modification.
4. 3 weld counters.
5. Rotation programming by time or degrees.
6. Encoder-feedback servo controls.
7. Graphical user interface.
8. Project management software.
9. Weld data logging.
10. Real-time data acquisition.
11. Customizable reports.
12. English/metric converters.
13. Built-in high-speed printer.
14. USB port (for use with a mouse, keyboard, printer, external memory device, etc.).
15. On-screen help.
16. Multiple-language capability.
17. Password protected log-on.



**Automatic Weld Schedule Generation**  
Creates a weld schedule based on the weld head used, the tube or pipe size and wall thickness.



**Weld Schedule Library**  
Stores weld schedules in multiple folders that may be categorized by tube or pipe size, material, job, project, operator name or any other appropriate category.



**Weld Schedule Modification**  
Values of Amps, pulse rate, travel speed, and wire feed rate may be instantly raised or lowered at the touch of a button.



## ACCESSORIES

- ⇒ Remote operator's pendant.
- ⇒ Weld ID label printer.
- ⇒ Weld head and pendant extension cables.
- ⇒ Water cooling unit.

## The Global Welding Company

For further information please visit our website



Dynamic. Growing. Integrated.

[www.arcmachines.com](http://www.arcmachines.com)

[www.theglobalweldingcompany.com](http://www.theglobalweldingcompany.com)

**HEADQUARTERS**  
Arc Machines, Inc.

10500 Orbital Way Pacoima,  
CA 91331 U.S.A.

Distributed by:

**Practical Tools Inc.**

**P.O. Box 233 Aurora, Ontario L4G 3H3**

**905-727-0014 / 888-847-8880**

**email: [practicaltools@bellnet.ca](mailto:practicaltools@bellnet.ca)**